



INSTRUCTION MANUAL

ELECTRIC TABLETOP HEATER

MODEL NUMBER: COH40002

ITEM NUMBER: P04-UR15D4



Thank you for purchasing your new
ELECTRIC TABLETOP HEATER

DO NOT RETURN THIS ITEM TO THE STORE

Should you encounter problems after following all the steps herein contained please contact our Customer Support: Call 1-888-227-3340 or email: customerservice@dekoliving.com. Kindly provide the model number, place and date of purchase and a short description of the problem.

LIMITED WARRANTY This product has a 1 year Limited Warranty. This warranty is limited to the replacement of defective parts only. Labor charges and/or damage incurred during installation, repair, replacement as well as incidental and consequential damages connected with the above are excluded. Any damage to this product as a result of neglect, misuse, accident, improper installation or use other than the purpose **SHALL VOID THIS WARRANTY**



IMPORTANT, RETAIN FOR FUTURE REFERENCE: READ CAREFULLY



Please read and understand this entire manual before attempting to assemble, operate or install the product. Failure to follow the dangers, warnings and cautions contained in this owners manual may result in a fire or explosion causing damage to property, serious bodily injury or death

08/2024



WARNING

FOR YOUR SAFETY

For Indoor Use Only

(inside any enclosure)

Installer: Leave these instructions with the consumer.

Consumer: Keep these instructions for future reference.

1) Improper installation, adjustment, alteration, service or maintenance can cause injury or property damage.

2) Read the installation, operation, and maintenance instructions thoroughly before installing or servicing this equipment.

3) Failure to follow these instructions could result in fire or explosion, which could cause property damage, personal injury or death.

1. Read all instructions before using this unit.
2. **DO NOT** leave this unit unattended when in use.
3. This heater will get hot when in use. Do not touch hot surfaces.
4. **Caution:** Some parts of this product can become very hot and cause burns. Particular attention has to be given when children and vulnerable people are present.
5. **DO NOT** move the unit when in use. Wait until the heater is completely cool before moving and check that it has been unplugged from the power supply.
6. Position the unit at least 1m away from highly combustible materials such as furniture, trees, leaves, dry grass and bushes.
7. The heater must be a minimum of 1.8m away from the ground and a minimum of 0.5m away from the ceiling of a building or overhanging items.
8. The heater must not face with the heating element pointing upwards towards a ceiling. The heater element must be facing the area it is to heat.
9. **WARNING:** In order to avoid overheating do not cover the heater. It is not for drying clothes.
10. Keep children and pets at a safe distance from the unit.
11. This appliance can be used by children aged from 8 years and above and persons with reduced physical, sensory or mental capabilities or lack of experience and knowledge if they have been given supervision or instruction concerning use of the appliance in a safe way and understand the hazards involved.
12. Children shall not play with the appliance. Cleaning and user maintenance shall not be made by children without supervision.
13. **DO NOT** operate the heater if any signs of damage or malfunction manifest themselves.
14. **DO NOT** attempt to repair or adjust any electrical or mechanical functions on this unit. The unit does not contain any user serviceable parts. Only a qualified electrician should perform servicing or repairs. Attempting to repair the unit yourself will void your warranty.
15. If the power cable is damaged, it must be replaced by the manufacturer, its service agent or similarly qualified persons in order to avoid a hazard.
16. **DO NOT** handle the element with bare hands. If it is inadvertently touched, remove finger marks with a soft cloth and methylated spirits or alcohol, otherwise the marks will burn into the element causing premature heater failure.
17. **DO NOT** replace or attempt to replace the element in this product.
18. This product is suitable for indoor and outdoor use. Do not use this heater in the immediate surroundings of a bath, shower or swimming pool.
19. This product must not be left outdoors exposed to the elements for long periods of time.
20. **DO NOT** touch the plug with wet or damp hands.
21. **DO NOT** run the power cable under carpeting.
22. **DO NOT** cover the power cable with rugs, runner, or similar coverings. Arrange the power cable away from foot traffic and where it will not be tripped over.
23. **DO NOT** wind the power cable around the unit.
24. **DO NOT** insert or allow foreign objects to enter any ventilation or opening on the heater, as this may result in electric shock, fire, or damage to the heater.
25. To prevent a possible fire, do not block the air vents.
26. A heater has hot and arcing or sparking parts inside. Do not use in areas where petrol, paint, explosive and/or flammable liquids are used or stored. Keep unit away from heated surfaces and open flames.
27. Where possible, avoid the use of an extension cable as this may overheat and cause a fire. However, if you have to use an extension cable, ensure it is suitable for the purpose, has been tested for outdoor use and preferably has an RCD device fitted or attached.
28. Always ensure the heater is plugged into a suitable socket, one that is tested for outdoor use.
29. To disconnect heater, turn controls to OFF, then remove plug from socket. Do not unplug by pulling on the power cable.
30. Always unplug the unit and ensure the unit is completely cold before moving, cleaning or storing.
31. This heater is intended for domestic use only and should not be used commercially for contract purposes. Any alternative use, not recommended by the manufacturer, may result in fire, electric shock, or injury to persons.
32. The use of attachments on the heater is not recommended.
33. **WARNING:** This heater is not equipped with a device to control the room temperature. Do not use this heater in small rooms when occupied by persons not capable of leaving a room on their own, unless constant supervision is provided.
34. Check exterior walls for areas of damage before installing the heater.
35. Always use on a dry, suitably strong, stable, flat and level surface.
36. Check exterior walls for communication and electrical cables and pipelines. Should any service lines be present in the immediate vicinity do not install your heater, find an alternative location to install this product.
37. **DO NOT** position directly above or below an electrical socket.
38. **DO NOT** remove any of the warning stickers or signs from the product.

ALL ABOVE MUST BE EXACTLY FOLLOWED.

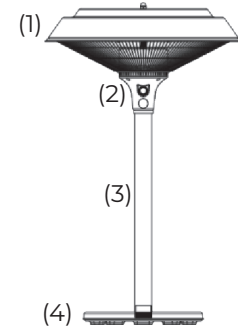
Installation for Wall Mounting

Before installation, please pay attention to below notes

- Products should be put down gently.
- Acid and alkali environment installation is not recommended.
- The product must be grounded.
- The product was required to check the product brand mark on the voltage and the local voltage whether conform.
- Ensure the power rating should have sufficient current carrying capacity.
- Disconnect the power supply at the circuit breaker.

Part Description

1. On the cover
2. Switch
3. The pipe
4. Chassis



WARNINGS

- This electrical appliance complies with technical safety and electromagnetic compatibility standards.
- Never touch your heater when in operation (risk of burns).
- Never touch it with wet hand.
- Never rotate the heating part of the appliance during operation. To change the tilt angle of the heating part, we advise you to wait for 15 minutes after the appliance has been switched off.
- Never place anything on your heater's safety guard as this may cause overheating (e.g. towels)
- Never use your appliance to dry washing.
- Although the heating element has stopped glowing, it may still be live and potentially dangerous. Check that the selection indicator (5) is in position off before taking any action.
- Switch off your appliance:
 - After use
 - In the event of malfunction
 - Before cleaning it.
- Never operate your appliance if it has fallen over.
- Never dismantle your appliance. An incorrectly repaired appliance may be dangerous to the user. If you encounter any problems, please take it to one of the Approved Service Centers in our customer service network
- The warranty will be void in the event of damage arising from improper use.
- Do not use this heater in the immediate surrounding of a bath, a shower or a swimming pool.
- This movable appliance is designed for use in gardens, and can be used indoor and outdoor. The warranty will not apply to appliances used for professional usage. Although the heater may be used outdoors, the main plug must only be connected to the supply indoors.
- The heater is provided with an anti-tilt switch will switch off the heater if it is overturned, and will switch it on again automatically when it is restored to its upright position.

VOLTAGE

Before using the appliance at the first time, ensure that your mains voltage corresponds to voltage indicated on the appliance. It is a class I appliance and must be earthed.

SAFETY

CAUTION: Before fitting or removing the appliance, ensure that the heater's power line supplying the heater is disconnected. Check that the power line is connected to a 30A differential circuit breaker.

- This appliance is designed for use in gardens, and any room in your house, including those where there is a risk of splashing. The installation and use of your appliance must comply with the applicable standards in your country.
- When it is switched on, an electrical heating appliance reaches very high temperature liable to cause burns. Make sure that all other users are aware of the risks.
- If you have any doubts concerning installation possibilities for this heater, please consult a qualified electrician.
- Children, the elderly and the infirm may not always be aware of the danger involved in using electrical appliances. ■ ■
- Never allow this appliance to be used without supervision.
- The appliance must be positioned so that the plug is accessible.
- If the supply cord is damaged, it must be replaced by the manufacturer or its service agent or similar qualified person in order to avoid a hazard
- The heater must not be located immediately below a socket-outlet
- Do not use this heater with a programmer, timer or any other device that switches the heater on automatically, since a fire risk exists if the heater is covered or positioned incorrectly.
- Do not place the appliance close to curtains and other combustible materials.

Installation for Wall Mounting (continued)

Before installation, please pay attention to below notes

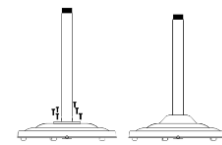
- Products should be put down gently.
- Acid and alkali environment installation is not recommended.
- The product must be grounded.
- The product was required to check the product brand mark on the voltage and the local voltage whether conform.
- Ensure the power rating should have sufficient current carrying capacity.
- Disconnect the power supply at the circuit breaker.

Part Description

1. On the cover
2. Switch
3. The pipe
4. Chassis

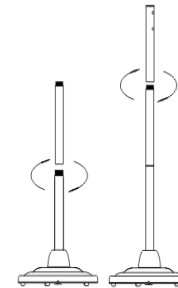
1) Use 6 M6*30 screws to connect the bottom tube and the disc, and then put the decorative cover on the bottom tube on the disc. (see figure 1)

Figure 1



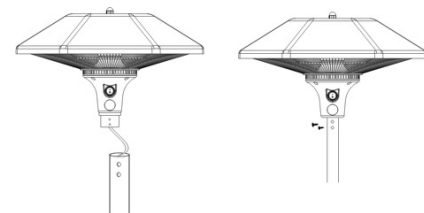
2) Turn the middle tube clockwise to fix it on the bottom tube, take out the upper tube and turn it clockwise to fix it on the middle tube. (shown in figure 2)

Figure 2



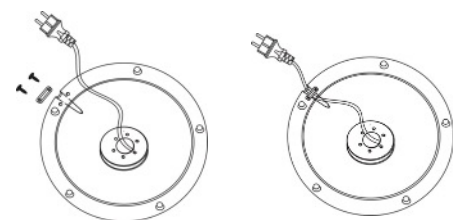
3) Thread one end of the product's power cord through the tube and secure the upper tube and product with two 3.5x12 Phillips screws. (shown in figure 3)

Figure 3



4) Fix the Power cable on the Iron Base by using 2pcs 6*16mm screws. (shown in figure 4)

Figure 4



Operating Instructions

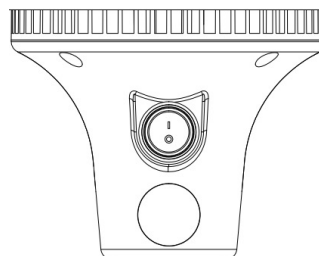
The heater must provide appropriate voltage and frequency (AC220-240V,50Hz) and be connected to separate, properly grounded branch circuits protected by circuit breakers that comply with wiring rules.

NOTE: The operating position is only when the heater is in upright condition.

Switch Instructions

1. Turn on the main switch and the red light flashes.
 2. Press the touch button to turn on the inner heating tubes.
 3. Press the touch button again to turn off the inner heating tubes and turn on the outer heating tubes.
 4. Press the touch button again to turn on the inner and outer heating tubes at the same time.
 5. Press the touch button again to stop working.
- (shown in figure 5)

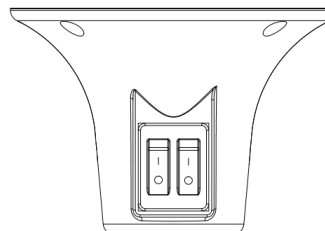
Figure 5



Control Instructions

1. Press the switch on the left to open the inner heating tube.
2. Press the right switch to turn on the external heating tube.

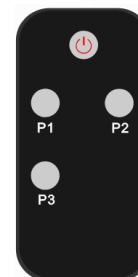
Figure 6



Remote Control

1. Press the switch on the left to open the inner heating tube.
 2. Press the right switch to turn on the external heating tube.
- (shown in Figure 7)

Figure 7



Maintenance

Attention! Careful and regular maintenance of **Infrared Heater** is required to maintain a long and efficient operation of your appliance.

- Check the cleanliness of the Reflector and IR-Filament at least once a month. If necessary, apply cleaning and maintenance instructions.
- The number of checks may be increased considering the amount of the dust in the environment.
- Check the shape of the heater, inner wire and appearance while cleaning the appliance. If any problem with heater please contact professionals.
- Check the cable and plug while cleaning the heater. If any problem with heater please contact professionals.
- It is recommended to replace the mirror every two years to improve the operating efficiency.

Cleaning

Attention! Regular and careful cleaning helps your **Infrared Heater** operate for longer years and more efficiently.

- For your safety, make sure the power is off before cleaning your appliance.
- Use a slotted screwdriver to remove the front grille from the frame's entrance.
- For your safety, make sure the power is off and the power cable plug must be unplugged.
- Reflectors and filaments must be cleaned with soft cloth, smooth brush. Cleaner should not too wet and could moist, the cleaner should not contain any chemicals.
- Avoid using cleaning tools (cleaners, etc.) that can damage reflectors.
- Insert a wire grid with a slotted screwdriver.

Specifications

Voltage: AC 120V

Frequency: 60Hz

Electric Power: 1500W



The symbol below
is on the product or in the instruction manual.



This means that your electrical or electronic
equipment should be disposed at the end of its life
separately from your household waste.

There are separate collection systems
for recycling in the your local area.

For more information,
please contact the local authority or
your retailer where you purchased the product.