



# INSTRUCTION MANUAL

## CARBON FIBER STAND HEATER

MODEL NUMBER: COH40004

ITEM NUMBER: T13-GR15VDL



Thank you for purchasing your new  
CARBON FIBER STAND HEATER

### **DO NOT RETURN THIS ITEM TO THE STORE**

Should you encounter problems after following all the steps herein contained please contact our Customer Support:  
Call 1-888-227-3340 or email: [customerservice@dekoliving.com](mailto:customerservice@dekoliving.com). Kindly provide the model number, place and date of purchase and a short description of the problem.

**LIMITED WARRANTY** This product has a 1 year Limited Warranty. This warranty is limited to the replacement of defective parts only. Labor charges and/or damage incurred during installation, repair, replacement as well as incidental and consequential damages connected with the above are excluded. Any damage to this product as a result of neglect, misuse, accident, improper installation or use other than the purpose **SHALL VOID THIS WARRANTY**



**IMPORTANT, RETAIN FOR FUTURE REFERENCE: READ CAREFULLY**



Please read and understand this entire manual before attempting to assemble, operate or install the product. Failure to follow the dangers, warnings and cautions contained in this owners manual may result in a fire or explosion causing damage to property, serious bodily injury or death

08/2024



## **WARNING**

FOR YOUR SAFETY

### **For Indoor Use Only**

(inside any enclosure)

**Installer:** Leave these instructions with the consumer.

**Consumer:** Keep these instructions for future reference.

1) Improper installation, adjustment, alteration, service or maintenance can cause injury or property damage.

2) Read the installation, operation, and maintenance instructions thoroughly before installing or servicing this equipment.

3) Failure to follow these instructions could result in fire or explosion, which could cause property damage, personal injury or death.

1. Read all instructions before using this unit.
2. **DO NOT** leave this unit unattended when in use.
3. This heater will get hot when in use. Do not touch hot surfaces.
4. **Caution:** Some parts of this product can become very hot and cause burns. Particular attention has to be given when children and vulnerable people are present.
5. **DO NOT** move the unit when in use. Wait until the heater is completely cool before moving and check that it has been unplugged from the power supply.
6. Position the unit at least 1m away from highly combustible materials such as furniture, trees, leaves, dry grass and bushes.
7. The heater must be a minimum of 1.8m away from the ground and a minimum of 0.5m away from the ceiling of a building or overhanging items.
8. The heater must not face with the heating element pointing upwards towards a ceiling. The heater element must be facing the area it is to heat.
9. **WARNING:** In order to avoid overheating do not cover the heater. It is not for drying clothes.
10. Keep children and pets at a safe distance from the unit.
11. This appliance can be used by children aged from 8 years and above and persons with reduced physical, sensory or mental capabilities or lack of experience and knowledge if they have been given supervision or instruction concerning use of the appliance in a safe way and understand the hazards involved.
12. Children shall not play with the appliance. Cleaning and user maintenance shall not be made by children without supervision.
13. **DO NOT** operate the heater if any signs of damage or malfunction manifest themselves.
14. **DO NOT** attempt to repair or adjust any electrical or mechanical functions on this unit. The unit does not contain any user serviceable parts. Only a qualified electrician should perform servicing or repairs. Attempting to repair the unit yourself will void your warranty.
15. If the power cable is damaged, it must be replaced by the manufacturer, its service agent or similarly qualified persons in order to avoid a hazard.
16. **DO NOT** handle the element with bare hands. If it is inadvertently touched, remove finger marks with a soft cloth and methylated spirits or alcohol, otherwise the marks will burn into the element causing premature heater failure.
17. **DO NOT** replace or attempt to replace the element in this product.
18. This product is suitable for indoor and outdoor use. Do not use this heater in the immediate surroundings of a bath, shower or swimming pool.
19. This product must not be left outdoors exposed to the elements for long periods of time.
20. **DO NOT** touch the plug with wet or damp hands.
21. **DO NOT** run the power cable under carpeting.
22. **DO NOT** cover the power cable with rugs, runner, or similar coverings. Arrange the power cable away from foot traffic and where it will not be tripped over.
23. **DO NOT** wind the power cable around the unit.
24. **DO NOT** insert or allow foreign objects to enter any ventilation or opening on the heater, as this may result in electric shock, fire, or damage to the heater.
25. To prevent a possible fire, do not block the air vents.
26. A heater has hot and arcing or sparking parts inside. Do not use in areas where petrol, paint, explosive and/or flammable liquids are used or stored. Keep unit away from heated surfaces and open flames.
27. Where possible, avoid the use of an extension cable as this may overheat and cause a fire. However, if you have to use an extension cable, ensure it is suitable for the purpose, has been tested for outdoor use and preferably has an RCD device fitted or attached.
28. Always ensure the heater is plugged into a suitable socket, one that is tested for outdoor use.
29. To disconnect heater, turn controls to OFF, then remove plug from socket. Do not unplug by pulling on the power cable.
30. Always unplug the unit and ensure the unit is completely cold before moving, cleaning or storing.
31. This heater is intended for domestic use only and should not be used commercially for contract purposes. Any alternative use, not recommended by the manufacturer, may result in fire, electric shock, or injury to persons.
32. The use of attachments on the heater is not recommended.
33. **WARNING:** This heater is not equipped with a device to control the room temperature. Do not use this heater in small rooms when occupied by persons not capable of leaving a room on their own, unless constant supervision is provided.
34. Check exterior walls for areas of damage before installing the heater.
35. Always use on a dry, suitably strong, stable, flat and level surface.
36. Check exterior walls for communication and electrical cables and pipelines. Should any service lines be present in the immediate vicinity do not install your heater, find an alternative location to install this product.
37. **DO NOT** position directly above or below an electrical socket.
38. **DO NOT** remove any of the warning stickers or signs from the product.

**ALL ABOVE MUST BE EXACTLY FOLLOWED.**

## Tripod Assembly

### Before installation, please pay attention to below notes

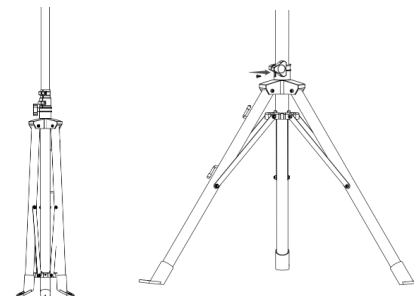
- Products should be put down gently.
- Acid and alkali environment installation is not recommended.
- The product must be grounded.
- The product was required to check the product brand mark on the voltage and the local voltage whether conform.
- Ensure the power rating should have sufficient current carrying capacity.

### Tripod Assembly:

**Accessories include:** 1 tripod, 2 wall-mounted brackets, 4 M5 butterfly tail caps, 3 plastic expansion, 3 ST4 \* 35 self-tapping screws, and 2 ST4 \* 12 self-tapping screws

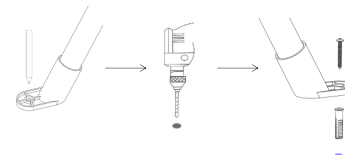
1. Take out the tripod, rotate the knob shown by the arrow counter clockwise, open the three bottom feet, and raise the bottom pipe to the position shown in the figure, to ensure that the hole position on the lower pipe can be seen on the side, and take the ST4 \* 12 self-tapping screw to lock it tightly. (shown in figure 1)

Figure 1



2. Move the tripod to the position to be placed flat, place with a pen, and use the impact drill to make a round hole with diameter 8 mm depth about 40-50mm, insert 3 plastic expansion anchors into 3 holes, fix the bracket with 3 ST4 \* 35 self-tapping screws, and ensure that the installation point is firmly fixed. (shown in figure 2)

Figure 2



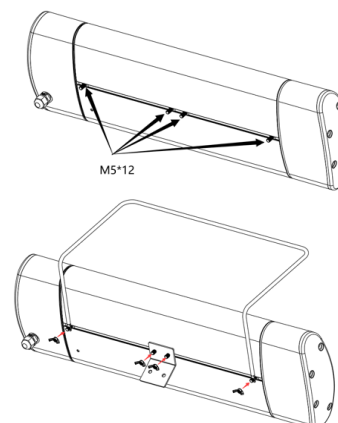
3. Pull the upper tube to the highest level to ensure that the hole on the upper tube is visible on the side, and lock the ST4 \* 12 self-tapping screw. (shown in figure 3)

Figure 3



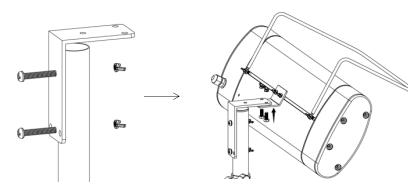
4. There are four screws on the back of the heater, take 120 wall bracket and fire bracket, cover the screw according to the hole position shown in the figure, control the support to symmetry in the middle of the product, and tighten the M5 butterfly tail nut. (shown in figure 4)

Figure 4



5. Install the L-shaped bracket on the tube (possibly round M6 nuts in the accessory pack). Then install the product on the L-shaped bracket. (shown in figure 5)

Figure 5



## Installation for Top/Ceiling Mounting

### For the cross bracket vertical infrared heater installation

**Accessories include:** 1 cross bracket, 2 wall-mounted brackets, 4 M5 butterfly tail caps, 4 plastic expansion, 4 ST4 \* 35 self-tapping screws, and 1 ST4 \* 12 self-tapping screw

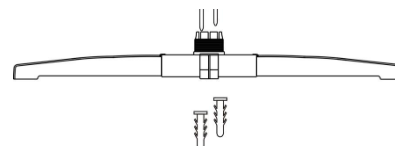
1. Unscrew the plastic plate above the counterweight and insert four extended feet down. (shown in figure 1)

**Figure 1**



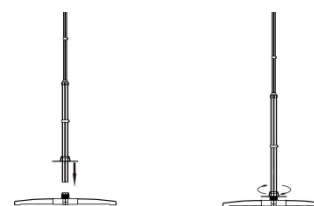
2. According to the hole position on the counterweight, use a round hole with a diameter of about 40-50mm of 8 mm, insert two plastic expansion anchors into two holes, fix the bracket with two ST4 \* 35 self-tapping screws, and ensure that the mounting point is firmly fixed. (shown in figure 2)

**Figure 2**



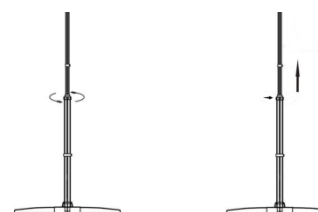
3. The just removed plastic plate through the large pipe, and then the large tube into the weight block, the plastic plate tightly. (shown in figure 3)

**Figure 3**



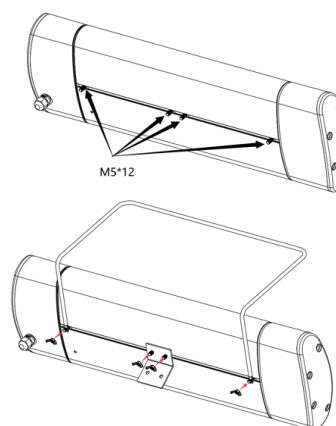
4. Pull the knob of the tubulto the highest position, tighten the knob and lock it with ST4 \* 12 tapping screw from the side. (shown in figure 4)

**Figure 4**



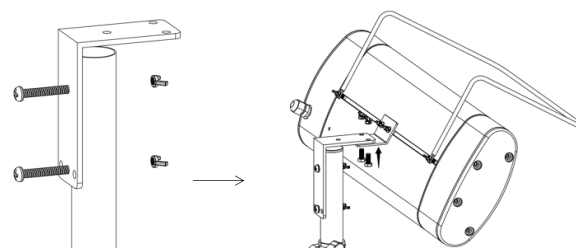
5. There are four screws on the back of the heater, take 120 wall bracket and fire bracket, cover the screw according to the hole position shown in the figure, control the support to symmetry in the middle of the product, and tighten the M5 butterfly tail nut. (shown in figure 5)

**Figure 5**



6. Install the L-shaped bracket on the tube (possibly round M6 nuts in the accessory pack). Then install the product on the L-shaped bracket. (shown in figure 6)

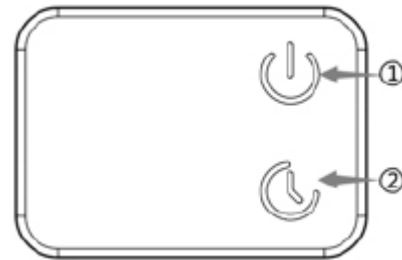
**Figure 6**



## Operating Instructions

---

1. Plug the power cord into the socket.
2. (1) is the power switch button. (2) is a timing button. Turn on the main switch on the side, and the (1) & (2) button shows a red light, and the product is in standby state. Touch (1) key in turn to switch between gears P0, P1, P2 and P3.  
P0: No power, it will automatically go out and enter standby after 5 seconds.  
P1: 1/3 total power  
P2: 2/3 total power  
P3: Full power
3. When the product is in work, you can touch the (2) key to set the timing. The total timing can be set for up to 24 hours. The timing activation lock button will display green, and the default state is red.

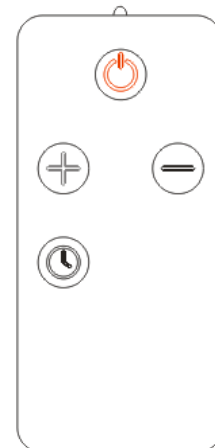


## Remote Control

---

**The remote controller can be operated only after the main switch is turned on.**

1. Press the on key on the remote controller, and the product will display P0.
2. At this time, you can switch the P1-P3 mode through "+" and "-", and press the to enter the timing setting.
3. You can set the timing of 0-24 hours through "+" and "-".
4. Press the on key again to enter the standby mode.



## Maintenance

---

**Attention!** Careful and regular maintenance of **Infrared Heater** is required to maintain a long and efficient operation of your appliance.

- Check the cleanliness of the Reflector and IR-Filament at least once a month. If necessary, apply cleaning and maintenance instructions.
- The number of checks may be increased considering the amount of the dust in the environment.
- Check the shape of the heater, inner wire and appearance while cleaning the appliance. If any problem with heater please contact professionals.
- Check the cable and plug while cleaning the heater. If any problem with heater please contact professionals.
- It is recommended to replace the mirror every two years to improve the operating efficiency.

## Cleaning

---

**Attention!** Regular and careful cleaning helps your **Infrared Heater** operate for longer years and more efficiently.

- For your safety, make sure the power is off before cleaning your appliance.
- Use a slotted screwdriver to remove the front grille from the frame's entrance.
- For your safety, make sure the power is off and the power cable plug must be unplugged.
- Reflectors and filaments must be cleaned with soft cloth, smooth brush. Cleaner should not too wet and could moist, the cleaner should not contain any chemicals.
- Avoid using cleaning tools (cleaners, etc.) that can damage reflectors.
- Insert a wire grid with a slotted screwdriver.

## Specifications

---

Voltage: AC 120V

Frequency: 60Hz

Electric Power: 1500W



The symbol below  
is on the product or in the instruction manual.



This means that your electrical or electronic  
equipment should be disposed at the end of its life  
separately from your household waste.

There are separate collection systems  
for recycling in the your local area.

For more information,  
please contact the local authority or  
your retailer where you purchased the product.